

PART OF THE SE.1/4, OF SECTION 28, T.7N., R.1W, S.L.B. & M.

# PARKINSON PLACE SUB

IN NORTH OGDEN CITY

SCALE 1" = 50'

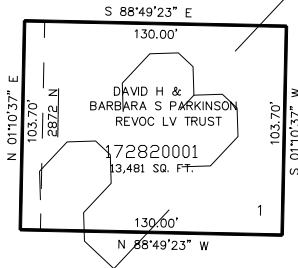
TAXING UNIT: 10

282

SEE PAGE 11

SEE PAGE 11

750 EAST ST.



SEE PAGE 11

SEE PAGE 11

FOR COMPLETE ENG DATA SEE  
ORIGINAL DEDICATION PLAT IN  
BOOK 57, PAGE 94 OF RECORDS.

10' UTILITY & DRAINAGE EASEMENTS EACH  
SIDE OF PROPERTY LINES AS INDICATED  
BY DASHED LINES EXCEPT AS OTHERWISE  
SHOWN.